

二维材料

Bi₂Se₃晶体

Bi₂Se₃是一种拓扑绝缘体。这些层通过范德华力相互作用堆叠在一起并且可以剥落为薄的2D层。Bi₂Se₃晶体具有金属外观



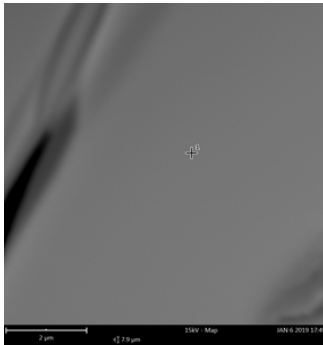
Bi₂Se₃晶体

Unit Cell	Multiple Unit Cell
-R 3 2" [R -3 m:h] #166 a=4.150Å b=4.150Å c=28.690Å α=90.000° β=90.000° γ=120.000°	

理论晶格常数

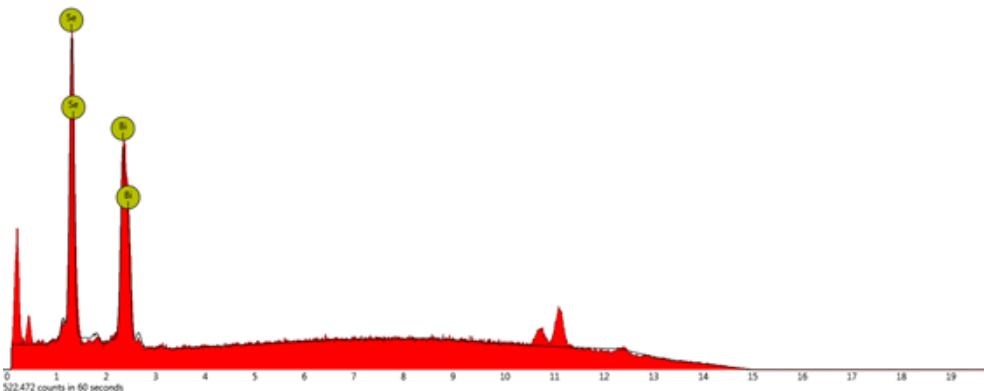
a= 4.16Å, α= 90.00°, V=431Å ³
b= 4.16Å, β= 90.00°, Rhombohedral R
c=28.69Å, γ=120.00°

实际晶格常数



Element Number	Element Symbol	Element Name	Atomic Conc.	Weight Conc.
34	Se	Selenium	58.65	34.89
83	Bi	Bismuth	41.35	65.11

FOV: 7.9 μm, Mode: 15kV - Map, Detector: BSD Full, Time: JAN 6 2019 17:49



EDX测量结果