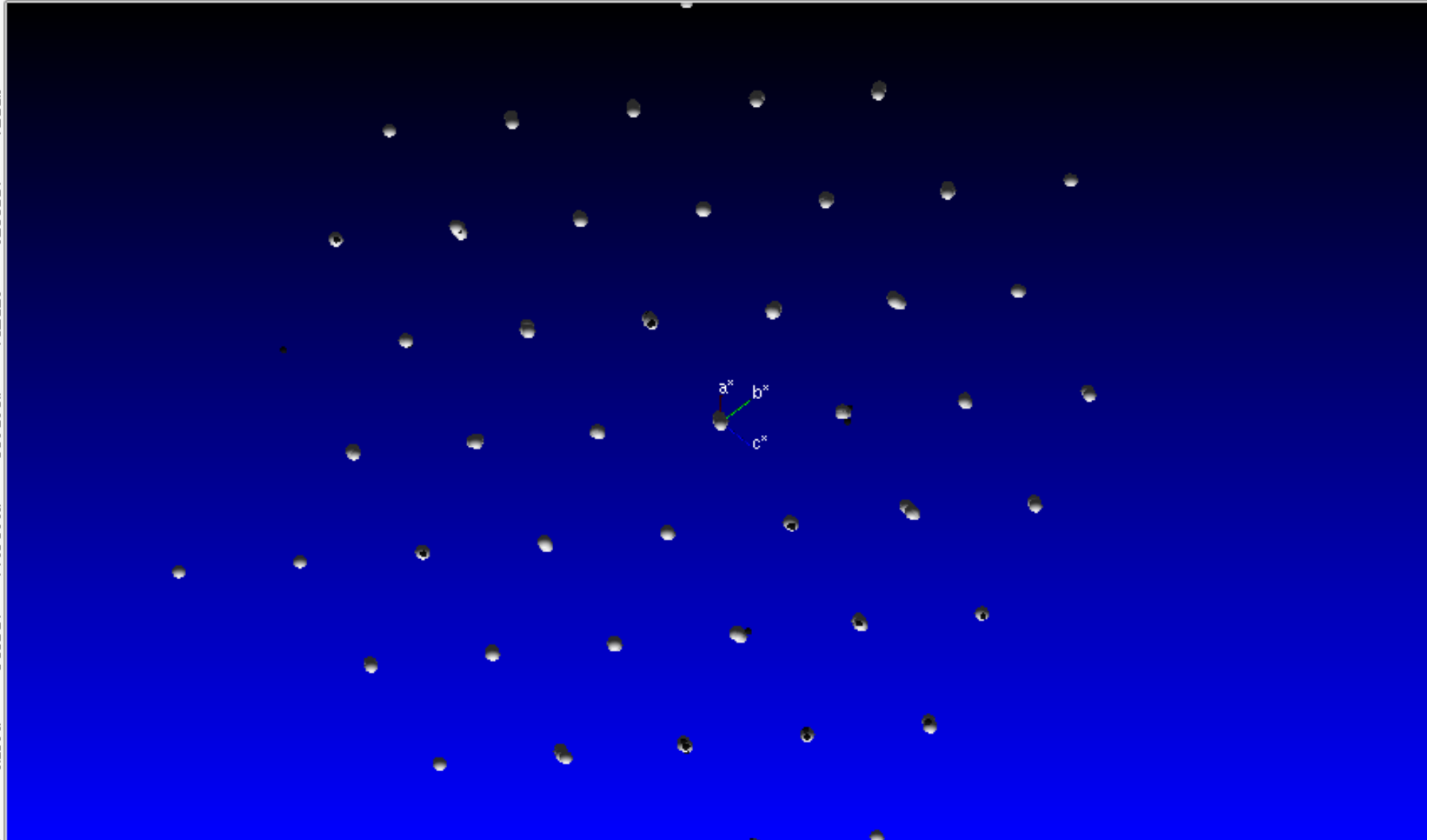


# Fe<sub>3</sub>GeTe<sub>2</sub>



# Fe<sub>3</sub>GeTe<sub>2</sub>

## 理论参数

| Unit Cell  | Multiple Unit Cell |
|--|--------------------|
| <pre>-P 6c 2c [P 63/m m c] #194<br/>a=3.991Å<br/>b=3.991Å<br/>c=16.330Å<br/>α=90.000°<br/>β=90.000°<br/>γ=120.000°</pre> |                    |

[https://materials.springer.com/isp/crystallographic/docs/sd\\_1420956](https://materials.springer.com/isp/crystallographic/docs/sd_1420956)

## 测得晶格参数

**a= 3.94760      α=90.0000 °**  
**b= 3.94760      β=90.0000 °**  
**c= 16.40360      γ=120.0000 °**  
空间群 P6(3)/mmc

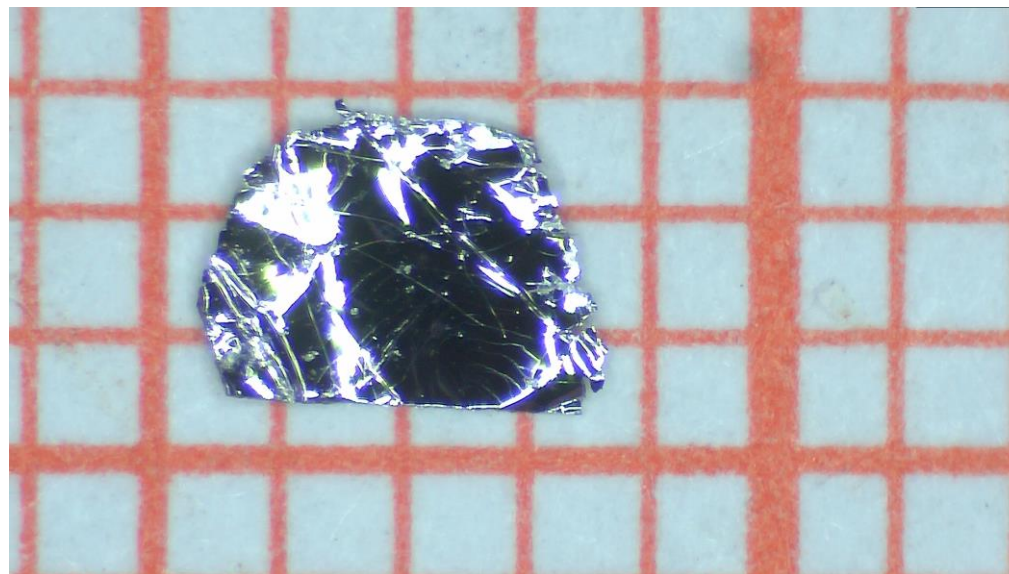
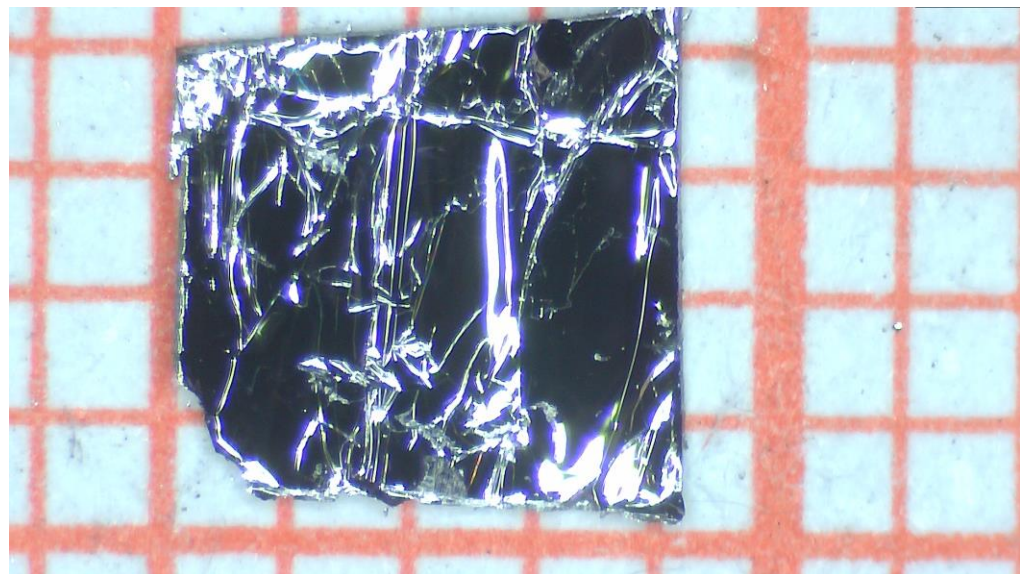


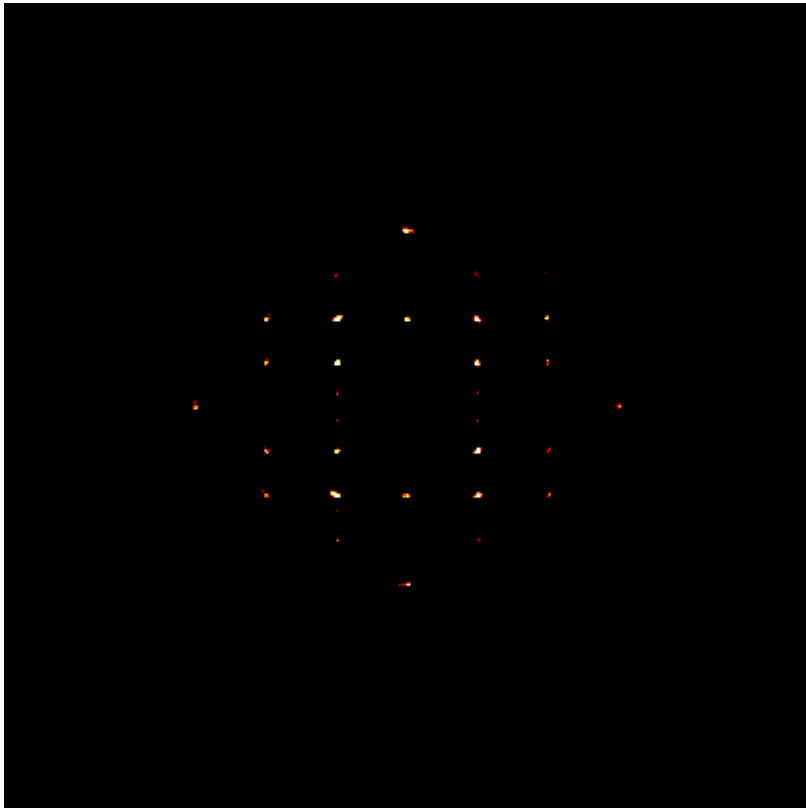
Instruction File:

mo\_20180625xwFGTe\_1\_0m

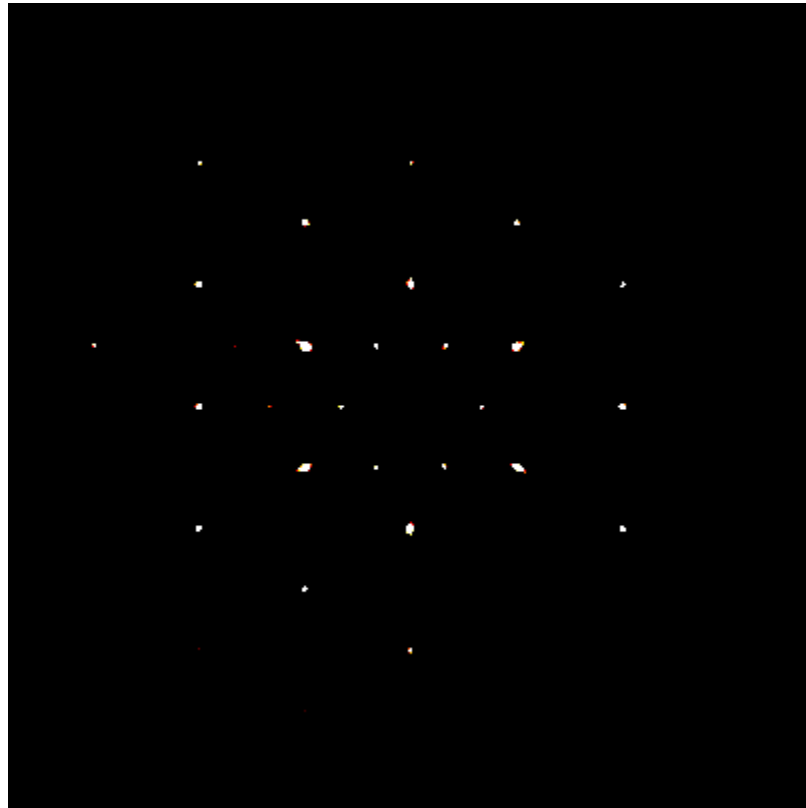
```
TITL mo_20180625xwFGTe_1_0m in P6(3)/mmc  
CELL 0.71073 3.94760 3.94760 16.40360 90.0000 90.0000 120.0000  
ZERR 1.00 0.00060 0.00060 0.00270 0.0000 0.0000 0.0000  
LATT 1  
SYMM x y z
```

# 单晶照片

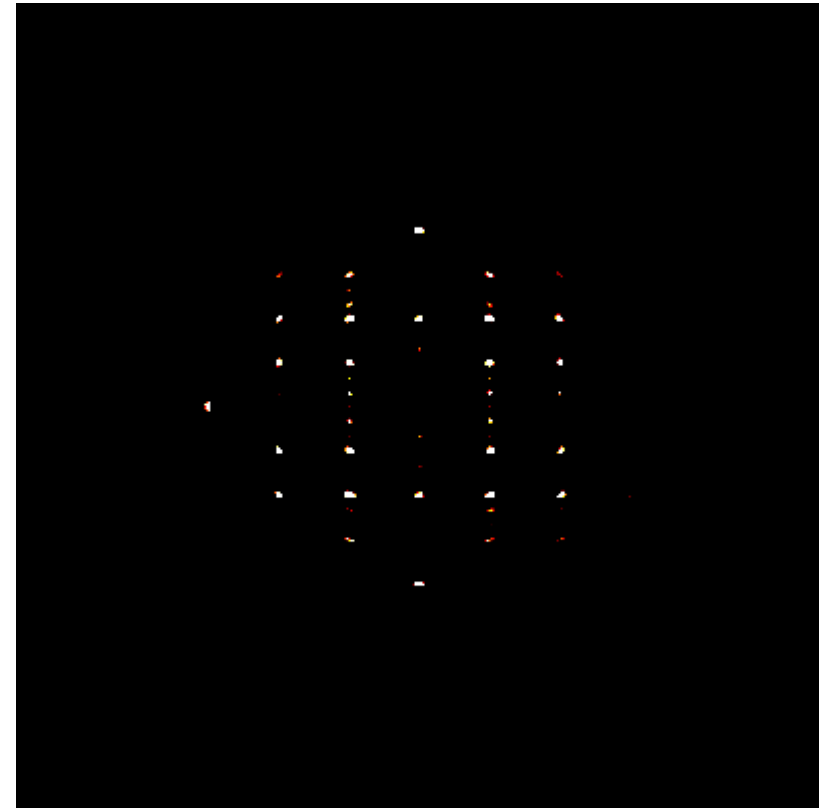




h0l



hk0



0kl

