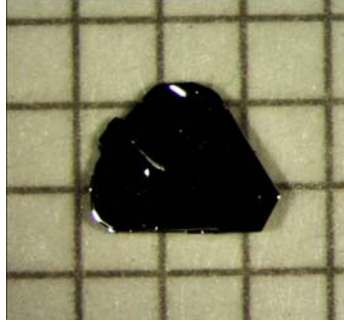
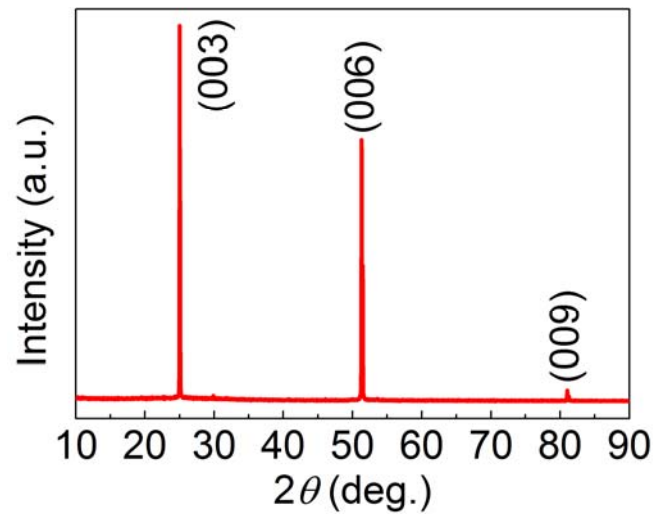


GeTe 单晶

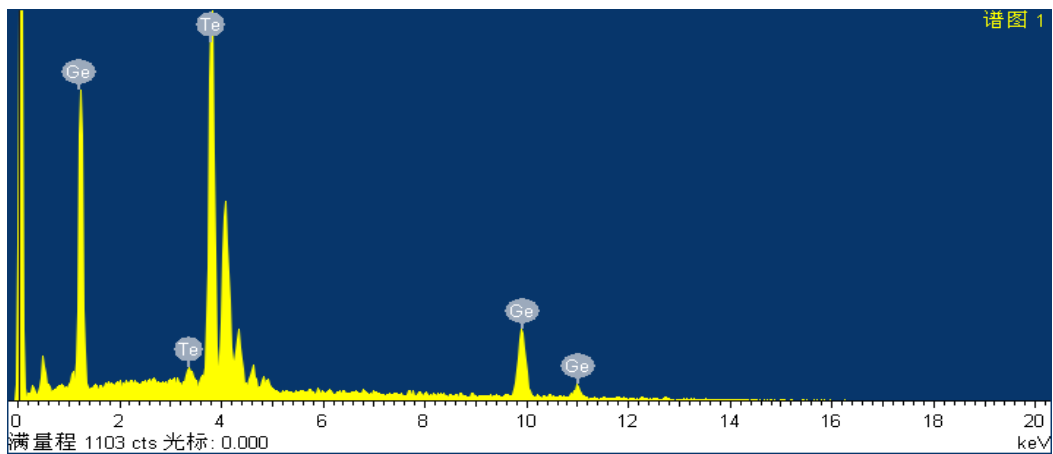
1. 中文名：碲化锗
2. 英文名：Germanium Telluride
3. 样品典型尺寸：2mm×2mm×0.1mm (长×宽×厚度)
4. 典型晶体图片：



5. 单晶 XRD：



6. 组分：Ge : Te = 1.04 : 1



7. 基本物性：Ferroelectric, $T_c \sim 670\text{K}$; Phase-Change Memories